



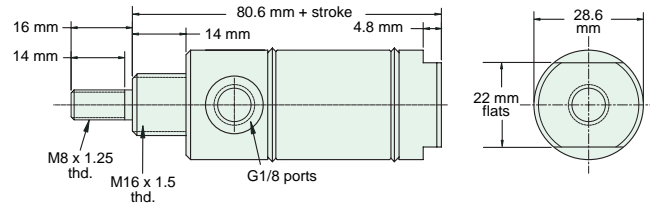
# 25 MM BORE STAINLESS STEEL METRIC CYLINDER

## M-SDR-17-□-□

Double Acting



**Mount:** Stud      **Standard Stroke Lengths:** 10 mm, 25 mm, 40 mm, 50 mm, 80 mm, 100 mm, 125 mm, 160 mm  
**Type:** Rotating Rod  
**Options:** B, R, V



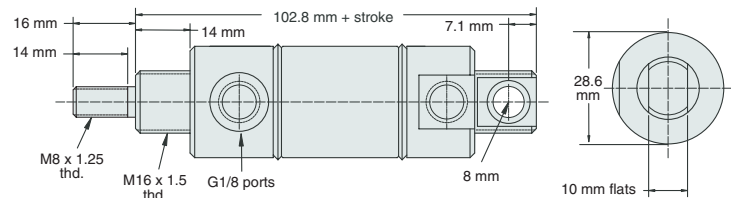
Nut included, but not shown on drawing

## M-UDR-17-□-□

Double Acting



**Mount:** Universal      **Standard Stroke Lengths:** 10 mm, 25 mm, 40 mm, 50 mm, 80 mm, 100 mm, 125 mm, 160 mm  
**Type:** Rotating Rod  
**Options:** B, R, V



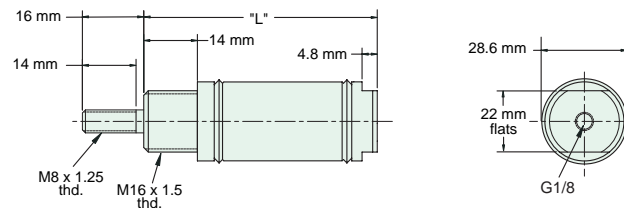
Furnished without nut(s). Order Part No. NM16-150.

## M-SSR-17-□-□

Single Acting



**Mount:** Stud      **Standard Stroke Lengths:** 10 mm, 25 mm, 40 mm, 50 mm, 80 mm, 100 mm, 125 mm, 160 mm  
**Type:** Rotating Rod  
**Options:** B, R, V



Nut included, but not shown on drawing

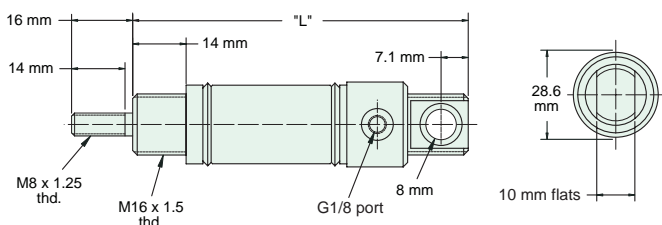
"L" (mm) for Standard Strokes								
Stroke	10	25	40	50	80	100	125	160
	75	90	120	129	188	208	247	311

## M-USR-17-□-□

Single Acting



**Mount:** Universal      **Standard Stroke Lengths:** 10 mm, 25 mm, 40 mm, 50 mm, 80 mm, 100 mm, 125 mm, 160 mm  
**Type:** Rotating Rod  
**Options:** B, R, V



Furnished without nut(s). Order Part No. NM16-150.

"L" (mm) for Standard Strokes								
Stroke	10	25	40	50	80	100	125	160
	97	112	142	151	210	230	269	333